

BA PSYCHOLOGY  
FIRST SEMESTER  
INTRODUCTION TO BIOPSYCHOLOGY  
BPY – 103

**SET  
B**

[USE OMR SHEET FOR OBJECTIVE PART]

Duration: 3 hrs.

Full Marks: 70

Time: 30 mins.

**(Objective)**

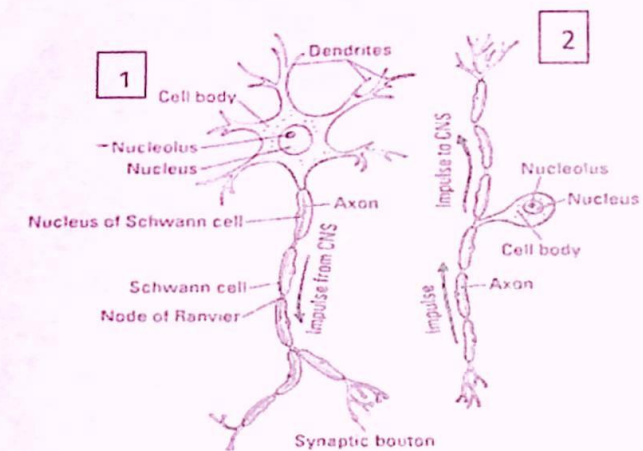
Marks: 20

Choose the correct answer from the following:

1 × 20 = 20

1. Full form of FMRI is -----
  - a. Functional magnetic restoring imaging
  - b. Fundamental magnetic resonance imaging
  - c. Fluid magnetic resonance imaging
  - d. Functional magnetic resonance imaging
2. Parathyroid hormone is secreted to maintain optimum level of \_\_\_\_\_ in the body.
  - a. Iron
  - b. Potassium
  - c. Calcium
  - d. Magnesium
3. What is area 22 of the brain?
  - a. Primary auditory cortex/ Superior Gyrus
  - b. Somatosensory cortex
  - c. Motor cortex
  - d. None of these
4. I. Wernicke's area controls the ability to understand the meaning of words and  
II. Broca's area, in conjunction with the motor cortex, controls the ability to speak those words.
  - a. Statement I is true only
  - b. Statement II is true only
  - c. Both the statement is true
  - d. None of the statement is true
5. Brain skull consists of \_\_\_\_\_ bones, 14 of which form the \_\_\_\_\_ and the remaining 8 form the cranial bones
  - a. 20, cheek bones
  - b. 22, facial bones
  - c. 23, forehead bones
  - d. 24, jaw bones
6. Pancreas weighs about \_\_\_\_\_ gms.
  - a. 50
  - b. 100
  - c. 150
  - d. 200
7. The breakdown or deterioration of neural structures, often due to injury, disease, or aging.
  - a. Neural plasticity
  - b. Neural Degeneration
  - c. Neural Regeneration
  - d. neural reorganization

8. Which is NOT the factor influencing regeneration?
- Age
  - Types of Neurons
  - Extent of Damage
  - Brain size
9. Identify the Type of Nerve from the given picture?



- 1 is motor neuron & 2 is sensory neuron
  - 1 is sensory neuron & 2 is motor neuron
  - Both 1 & 2 is sensory nerve
  - Both 1 & 2 is motor nerve
10. Good Feelings, satisfaction, comfort and alertness is associated with which neurotransmitter-
- Adrenaline
  - Dopamine
  - Serotonine
  - Endorphins
11. The study of biological bases of psychological processes and behavior.
- Biopsychology
  - Neuroscience
  - Neurophysiology
  - Behaviour Psychology
12. Read the Statements below and choose the option true to the statements.
- The Body's master control unit is Central Nervous system.
  - The body's link to the outside world.
- Only statement I is true
  - Only statement II is true
  - Both the statements are false
  - Both the statements are true
13. The Pineal Gland \_\_\_\_\_.
- Lies above the brain stem
  - Lies above the thyroid gland
  - Lies near the stomach and the small intestine
  - Lies on the neck region

14. The full form of ACTH is
- a. Angiotensin converting hormone
  - b. Acetylcholine
  - c. Adrenocorticotrophic hormone
  - d. Angiotensin converting enzyme
15. Antidiuretic hormone is responsible for
- a. Retaining water and sodium levels
  - b. Speeding up childbirth
  - c. Contraction of uterine muscles
  - d. None of the above
16. Glucocorticoids speed up the breakdown of \_\_\_\_\_.
- a. Glucose
  - b. Proteins
  - c. Minerals
  - d. Lipids
17. Adrenalin hormone is also known as \_\_\_\_\_.
- a. Epinephrine
  - b. Norepinephrine
  - c. Catecholamines
  - d. None of the above
18. The inner part of the Adrenal Gland is known as \_\_\_\_\_.
- a. Cortisol
  - b. Adrenal Cortex
  - c. Adrenal Medulla
  - d. None of the above
19. Deficiency of Thyroxin causes a condition known as \_\_\_\_\_.
- a. Graves' disease
  - b. Cretinism
  - c. Goitre
  - d. Rickets
20. \_\_\_\_\_gland is responsible for controlling the biological clock of the body.
- a. Pineal
  - b. Adrenal
  - c. Pituitary
  - d. Thyroid

-- -- -- --

**(Descriptive)**

Time : 2 Hr. 30 Mins.

Marks : 50

[ Answer question no.1 & any four (4) from the rest ]

1. What is Biopsychology? Discuss the scope of biopsychology? 3+7=10
2. Briefly state the structure of the Adrenal gland. Describe the hormones secreted by Adrenal Cortex and Adrenal Medulla. 2+8=10
3. Explain the hormones secreted by Anterior and Posterior Pituitary gland. 2+8=10
4. Describe the functions and the abnormalities of Thyroid gland. 5+5=10
5. Briefly explain the parts of the brain and its important functions? 10
6. Explain the mechanism of- (*any two*) 5+5=10
  - a) Synaptic Transmission
  - b) Neural conduction
  - c) Any two methods of neuropsychological psychological investigation in diagnosis of neurodevelopmental disorders.
  - d) Brain lobes and its function.
7. What do you mean by Neuroplasticity? Explain the important key features of neuroplasticity? 3+7=10
8. Neuroplasticity embodies the brain's remarkable ability to adapt, recover, and reorganize in response to both positive and negative stimuli. Explain these processes through which human brain changes? 10

== \*\*\* ==