

Photo Plate: 1



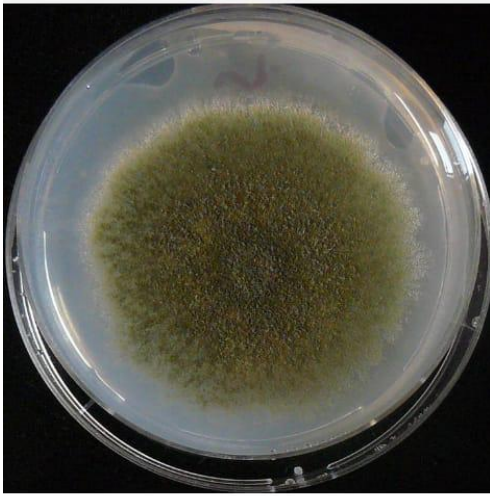
1(a) Plantation of *Quercus serrata*
at REC, Umrangso, food plant of *Antheraea proylei* J.



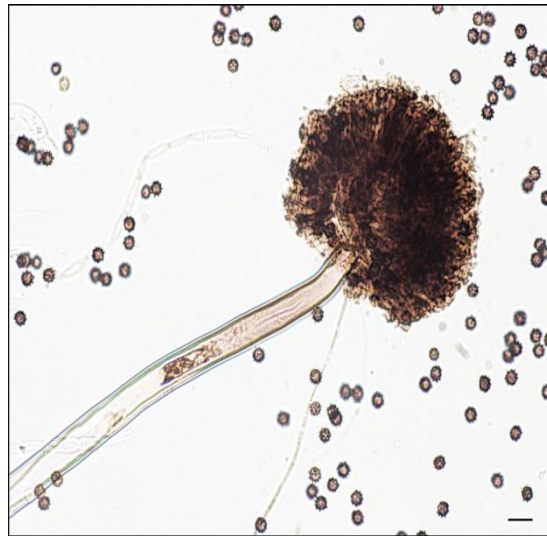
1(b) *Quercus serrata* seedlings.

Plantation of *Quercus serrata* and *Quercus serrata* seedlings

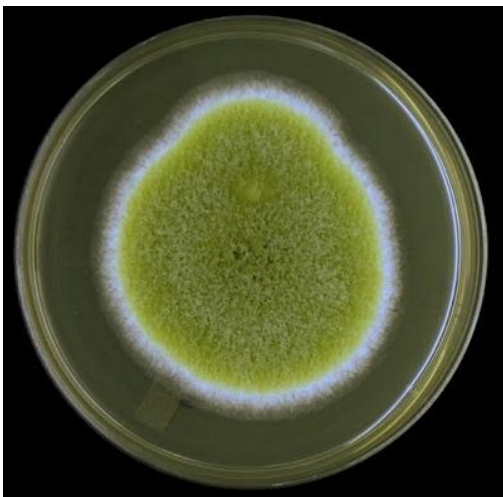
Photo Plate : 2



2(a) *Aspergillus niger* culture in petridish



2(b) *Aspergillus niger*

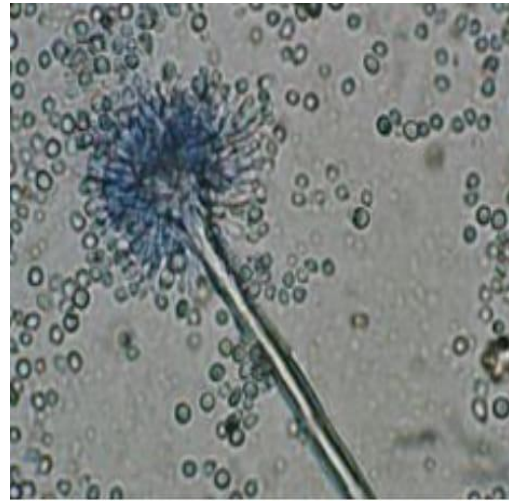
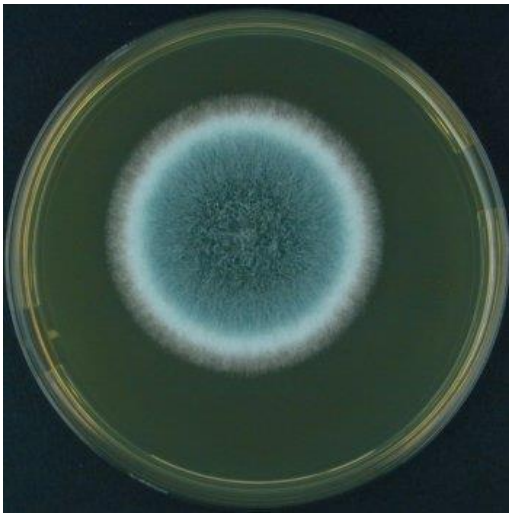


2(c) *Aspergillus flavus* culture in petridish



2(d) *Aspergillus flavus* spore with conidiophores

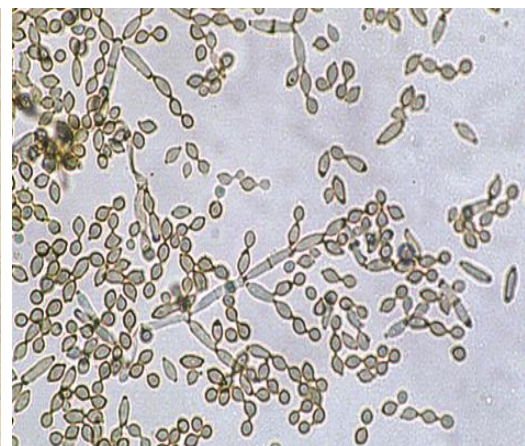
Photo Plate: 3



3(a) *Aspergillus fumigatus* culture in petridish **3(b) *Aspergillus fumigatus* conidiophores**



3(c) *Alternaria alternata* conidia

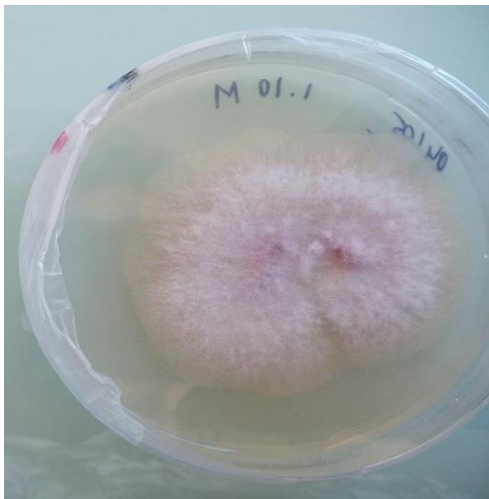


3(d) *Cladosporium* sp culture in petridish **3 (e) *Cladosporium* spores**

Photo Plate :4



4(a) *Curvularia* sp conidiophore



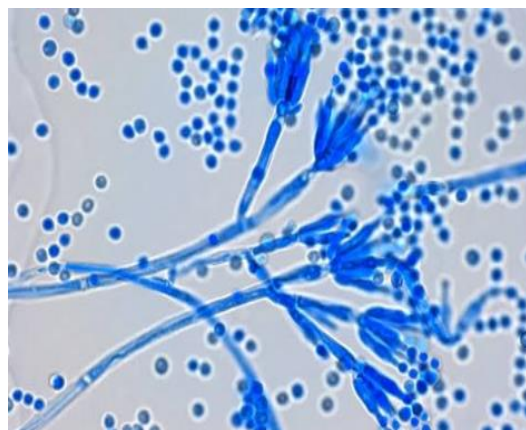
4(b) *Fusarium solani* culture in petridish



4(c) *Fusarium* sp spore

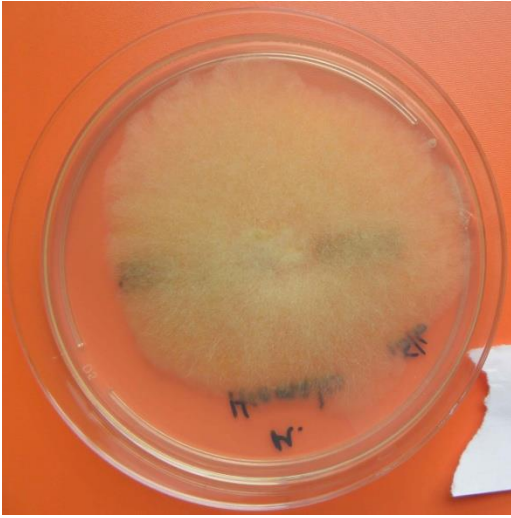


4(d) *Penicillium* sp culture in petridish

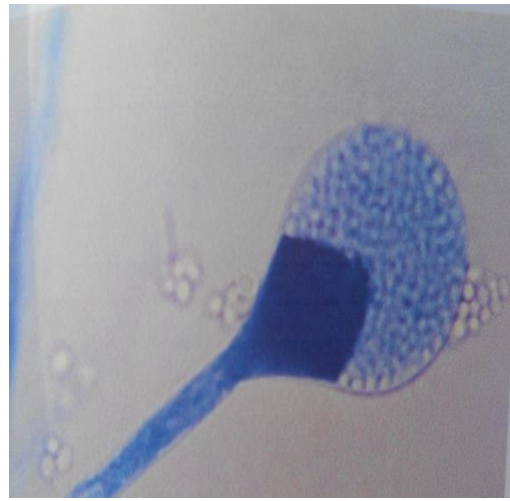


4(e) *Penicillium* sp conidiophore

Photo plate: 5



5(a) *Mucor* sp culture in petridish



5(b) *Mucor* sp

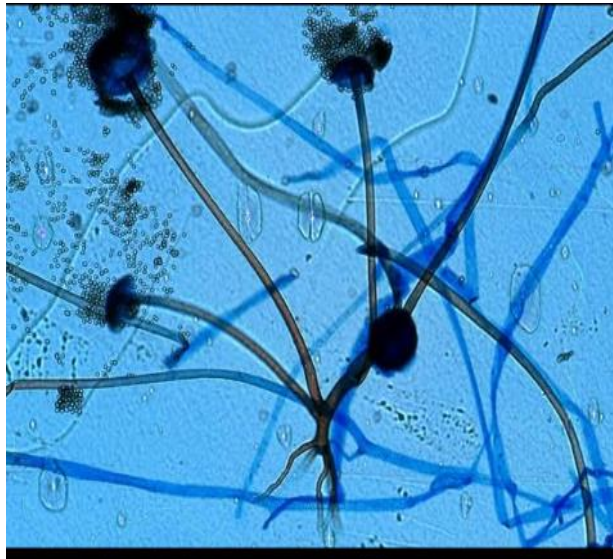


5(c) *Colletotrichum* sp

Photo Plate: 6



6 (a) *Rhizopus* sp culture in petridish



6(b) *Rhizopus* sp conidiospore

Photo Plate: 7



7(a) Cellular Rearing (*A proylei*) under nylon net



7(b) 1st instar (*A proylei*)



7(c) 2nd Instar (*A proylei*)



7(d) 3rd Instar (*A proylei*)



7(e) 4th Instar (*A proylei*)



7(f) 5th Instar (*A proylei*)

Photo Plate: 8



8(a) Silkmoth rearing of *Antheraea proylei* **Jolly**.



8(b)*A. proylei* (yellow)



8(c) *A. proylei* (green)



8(d)*A. proylei* (blue)

Fig: Silkmoth rearing of *Antheraea proylei* **Jolly**. and different coloured silkmoth of *Antheraea proylei* **Jolly**.

Photo Plate: 9



Silkworm rearing of *Antheraea proylei* **Jolly**.(yellow)

Photo Plate : 10



10(a) Male moth



10(b) Female moth

Moths of *Antheraea proylei* Jolly.



10(c) Eggs of *Antheraea proylei* Jolly.(silkworm eggs
*i.e.*Disease free lyings)



10(d) Cocoons of *Antheraea proylei* Jolly.

Photo Plate : 11



11(a) Reeling machine



11(b) Spinning machine



11(c) Preparation of Ghicha on earthen pot



11(d) Loom (production for fabric)

Reeling and Spinning machine, Preparation of Ghicha and Loom.

Photo Plate: 12



12(a) Reeled yarn



12(b) Spun yarn



12(c) Ghicha yarn



12(d) Different types of yarns

Different types of Oak tasar Silk yarn.

Photo Plate: 13



13(a) Oak tasar Saree



13(b) Waist coat, bag, and coat

(Product diversification of Ghicha yarns)

Oak tasar fabrics.